

**Notes :**

- All shown piping and insulation including consumer unit will be supplied by Space Air.
- Interconnecting refrigeration pipe work MUST be in enclosure and by specialist approved.
- Interconnecting electrical wiring by Altherma specialist and to IEE Reg and Part P.

**Required by others :**

- Mains water supply to tank and water piping kit.
- Flow and return from the heating system (Radiators, Underfloor or Fan coils).
- Drain connections.
- Towel Rail pipework.
- Mains power supply from the house consumer unit to Altherma consumer unit.

DRG no. SA0809-RTC



**Right Tank – Primary Heating & Hot Water Piping and Secondary Piping kits and accessories**

May 2009



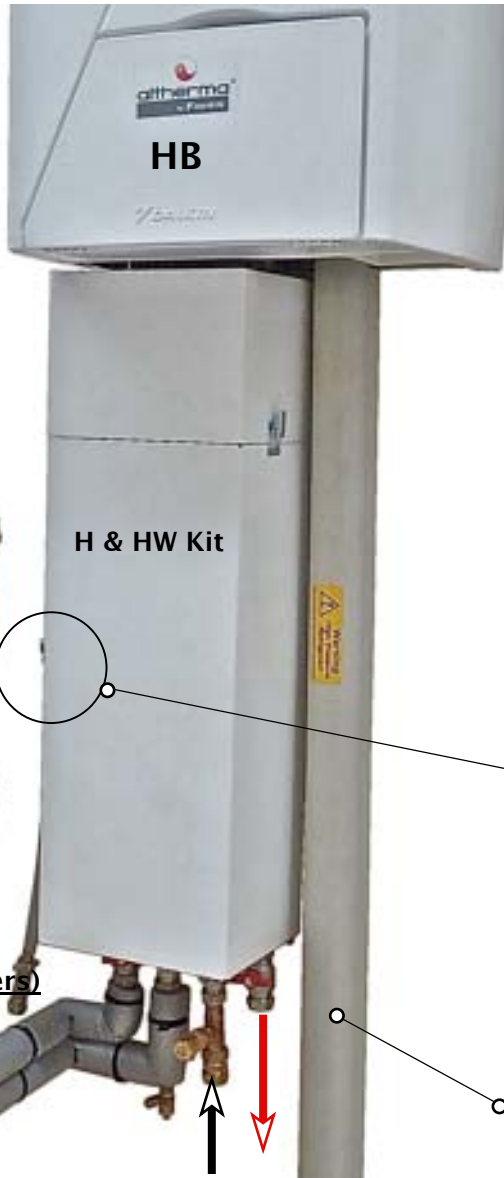
Schematics, Illustrations and drawings are supplied by Space Air Solutions Ltd. and subject to our Terms & Conditions and copy rights and protected by Design Right in UK & EU. Installation to be in accordance with National Regulations and with due care and attention. Space Air accept no 3rd party liability. Any inaccuracies with the above should be notified prior to installation. Installation of Altherma must be in accordance with the manufacturers and Space Air recommendations. Any deviation must be approved by Space Air otherwise warranty will be void.

Consumer Unit with Breakers  
OD, BH, TH, CP & Watt meter  
& mains switch Supplied

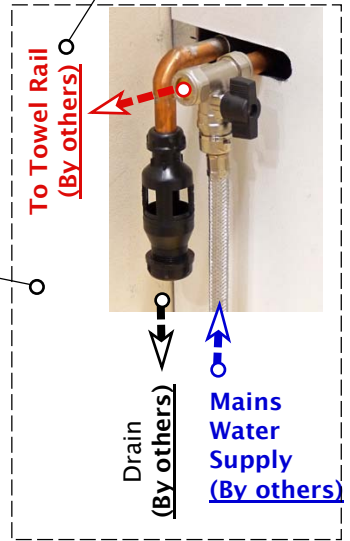


Altherma Power supply from  
house distribution board (By others)

To Hot water  
Services  
(By others)



Option 0850TRFM  
Towel Rail Flow  
meter



Refrigeration  
Pipework  
in Trunking

Flow & Return  
from Heating System  
(By others)

Mains  
Water  
Supply  
(By others)

Drain  
(By others)

**Notes :**

- All shown piping and insulation including consumer unit will be supplied by Space Air.
- Interconnecting refrigeration pipe work MUST in enclosure and by specialist approved.
- Interconnecting electrical wiring by Altherma specialist and to IEE Reg and Part P.

**Required by others :**

- Mains water supply to tank and water piping kit.
- Flow and return from the heating system (Radiators, Underfloor or Fan coils).
- Drain connections.
- Towel Rail pipework.
- Mains power supply from the house consumer unit to Altherma consumer unit.

DRG no. SA0809-LTC



Left Tank – Primary Heating & Hot Water Piping  
and Secondary Piping kits and accessories

May 2009



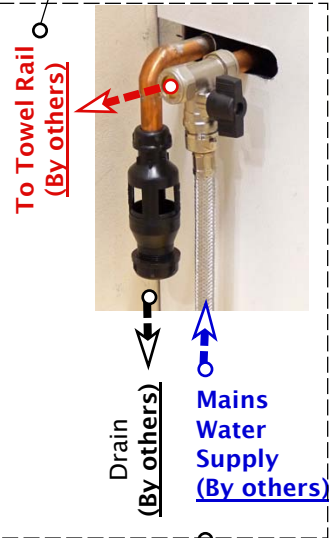
Schematics, illustrations and drawings are supplied by Space Air Solutions Ltd. and subject to our Terms & Conditions and copy rights and protected by Design Right in UK & EU. Installation to be in accordance with National Regulations and with due care and attention. Space Air accept no 3rd party liability. Any inaccuracies with the above should be notified prior to installation. Installation of Altherma must be in accordance with the manufacturers and Space Air recommendations. Any deviation must be approved by Space Air otherwise warranty will be void.

Altherma Power supply from house distribution board **(By others)** →



Consumer Unit with Breakers OD, BH, TH, CP & Watt meter & mains switch Supplied

Option 0850TRFM  
Towel Rail Flow meter



HB

Refrigeration Pipework in Trunking

To & From Solar Panel **(By others)**

H & HW Kit

Flow & Return from Heating System **(By others)**

To Hot water Services **(By others)**

Drain **(By others)**

Mains Water Supply **(By others)**

Notes :

- All shown piping and insulation including consumer unit will be supplied by Space Air.
- Interconnecting refrigeration pipe work MUST be in enclosure and by specialist approved.
- Interconnecting electrical wiring by Altherma specialist and to IEE Reg and Part P.

Required by others :

- Mains water supply to tank and water piping kit.
- Flow and return from the heating system (Radiators, Underfloor or Fan coils).
- Drain connections.
- Towel Railpipe work.
- Mains power supply from the house consumer unit to Altherma consumer unit.

DRG no. SA0809-RTSC



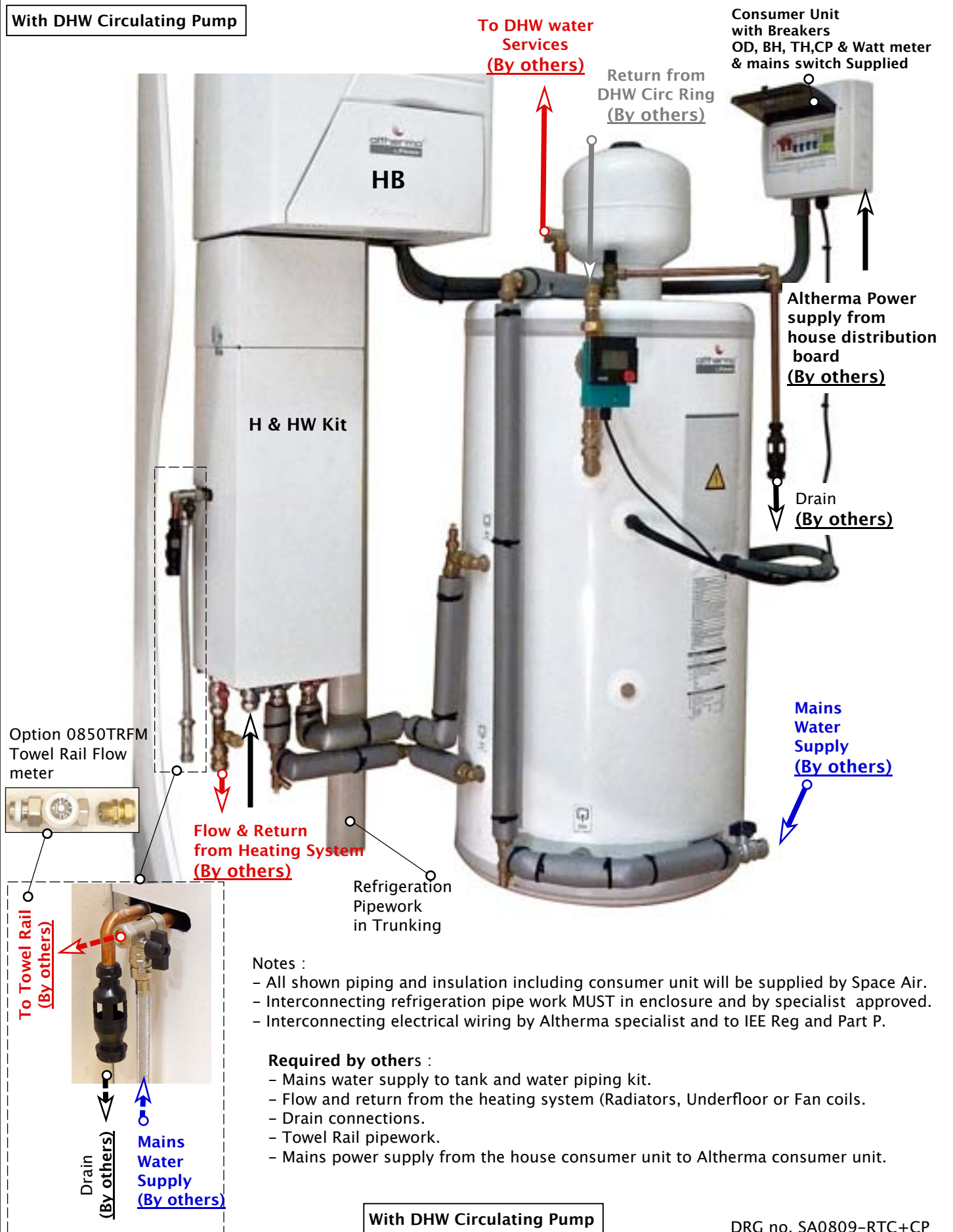
Right Tank – Primary Heating , Hot Water & Solar Piping and Secondary Piping kits and accessories

Aug 2009



Schematics, Illustrations and drawings are supplied by Space Air Solutions Ltd. and subject to our Terms & Conditions and copy rights and protected by Design Right in UK & EU. Installation to be in accordance with National Regulations and with due care and attention. Space Air accept no 3rd party liability. Any inaccuracies with the above should be notified prior to installation. Installation of Altherma must be in accordance with the manufacturers and Space Air recommendations. Any deviation must be approved by Space Air otherwise warranty will be void.

**With DHW Circulating Pump**



**Notes :**

- All shown piping and insulation including consumer unit will be supplied by Space Air.
- Interconnecting refrigeration pipe work MUST be in enclosure and by specialist approved.
- Interconnecting electrical wiring by Altherma specialist and to IEE Reg and Part P.

**Required by others :**

- Mains water supply to tank and water piping kit.
- Flow and return from the heating system (Radiators, Underfloor or Fan coils).
- Drain connections.
- Towel Rail pipework.
- Mains power supply from the house consumer unit to Altherma consumer unit.

**With DHW Circulating Pump**

DRG no. SA0809-RTC+CP

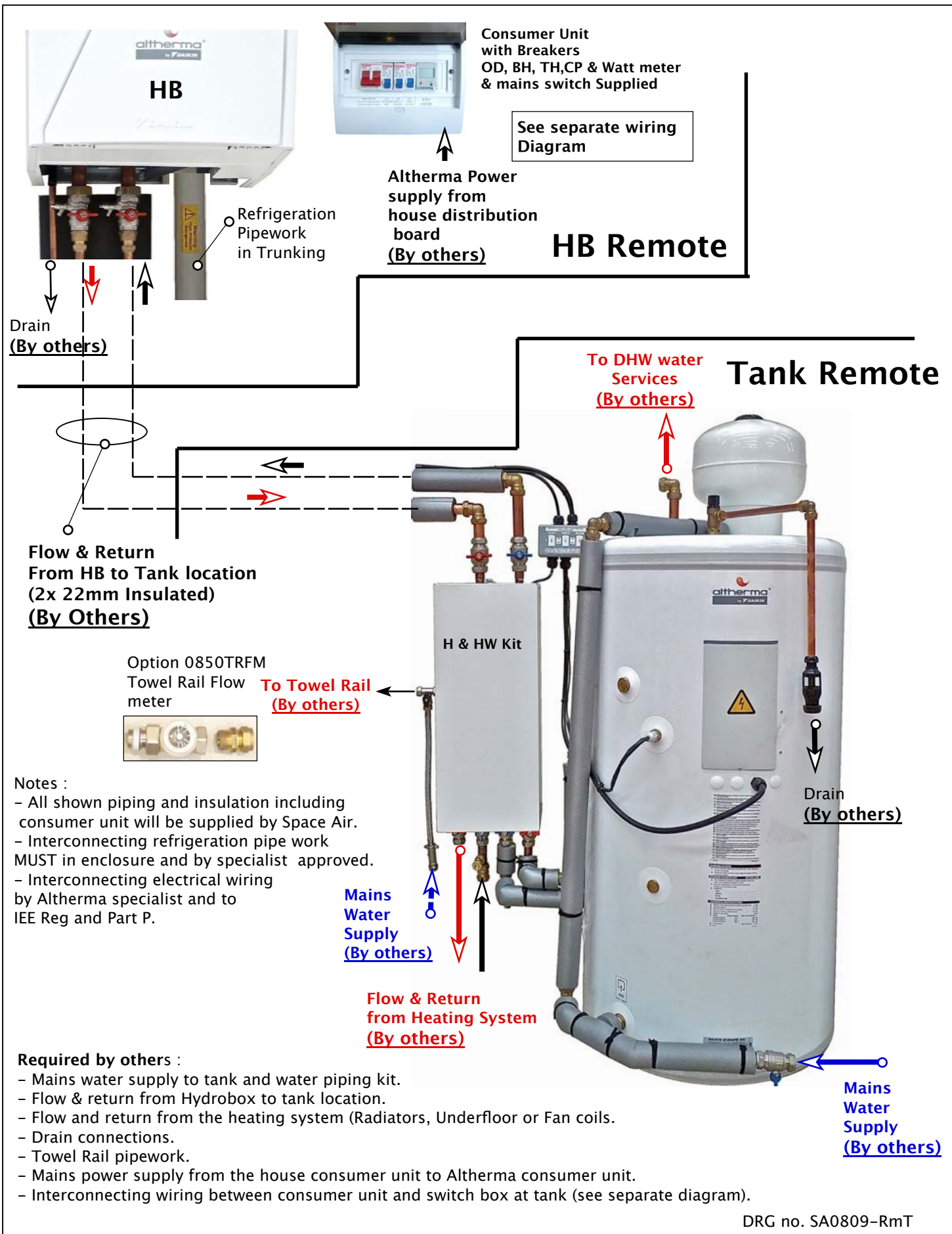


**Right Tank – Primary Heating & Hot Water Piping and Secondary Piping kits and accessories**

Oct 2009



Schematics, Illustrations and drawings are supplied by Space Air Solutions Ltd. and subject to our Terms & Conditions and copy rights and protected by Design Right in UK & EU. Installation to be in accordance with National Regulations and with due care and attention. Space Air accept no 3rd party liability. Any inaccuracies with the above should be notified prior to installation. Installation of Altherma must be in accordance with the manufacturers and Space Air recommendations. Any deviation must be approved by Space Air otherwise warranty will be void.



### Remote Tank – Primary Heating & Hot Water Piping and Secondary Piping kits and accessories

Dec 2009



Schematics, Illustrations and drawings are supplied by Space Air Solutions Ltd. and subject to our Terms & Conditions and copy rights and protected by Design Right in UK & EU. Installation to be in accordance with National Regulations and with due care and attention. Space Air accept no 3rd party liability. Any inaccuracies with the above should be notified prior to installation. Installation of Altherma must be in accordance with the manufacturers and Space Air recommendations. Any deviation must be approved by Space Air otherwise warranty will be void.